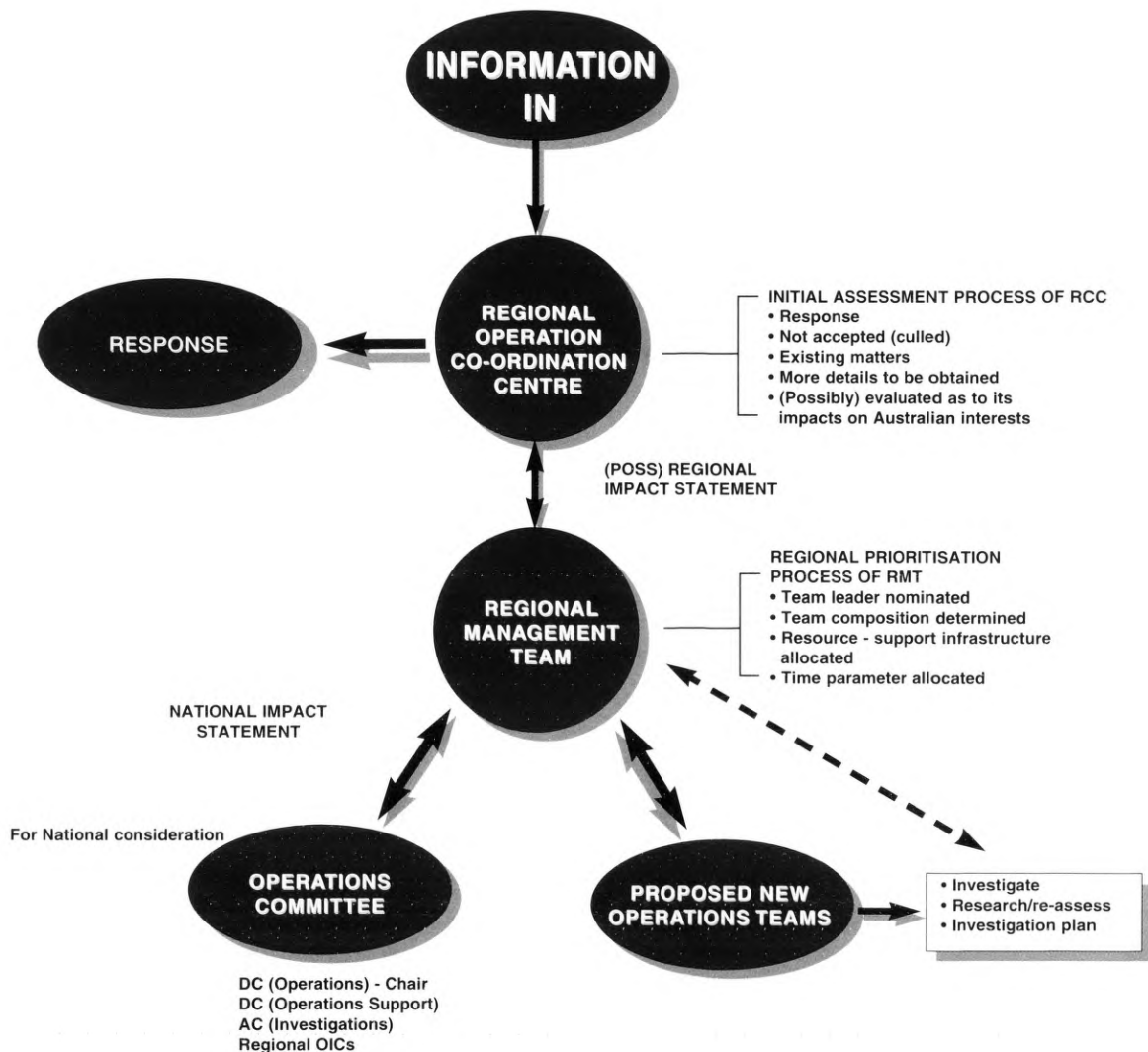


Operational Evaluation Model



The Operational Evaluation Model

The Operational Evaluation Model provides a method to rate tasks and is a tool to assist management prioritise operational decisions. It is a four-phase cyclic process to develop a Regional and or a National Impact Statement, if required. The four phases in the model are known as the Operational Evaluation Process.

The AFP has, and is expected by government to have, a response capability to react to high impact, sometimes incidental criminal activity and politically sensitive events.

It is not intended that response matters will be subjected to the Operational Evaluation Model, it primarily applies to those AFP tasks that are either proactive or protracted in

nature. The model also provides generic criteria to assist developing priorities for those response tasks which are clearly identified as an AFP responsibility.

A continual re-assessment process is included and should be completed on a regular basis and conducted in accordance with the processes identified in phases one and two.

The Change Management Steering Committee has approved the model in principle and the Operations Committee has directed a workshop, with representatives of all regions, to refine the processes.

The model commenced trial by all regions, except the ACT Region, from August 1, 1995.

The overall aim of the Operational Evaluation Model is to measure the work being undertaken against core business definitions.